



Esoteric Healing Webinar

Morya Federation
Esoteric Healing Faculty
August 2021

Continuing



Rays of the Astral Body – The 6th Ray

More on the Solar Plexus relating the Egoic
Ray to the astral plane

Visualization to use to subdue the astral body

Ray Six

Among the Tibetan's disciples-in-training, this was the most frequently found type of astral vehicle, occurring in more than 50% of the cases. Among average humanity, the ray six astral body would, presumably, be extremely common.

Michael D. Robbins

Key aspects of astral effects of 6th Ray

Astral Force	Centre	Bad aspect	Good aspect
Sixth ray Devotion	Solar plexus	Emotionalism	Aspiration Direction

R6 astral body & emotional glamours

Tendency to emotional glamors: The sixth ray emotional nature is more easily glamorized than any other. Perhaps, it is because it is so filled with desire, and desire causes it to magnify the value of that which is desired.

Any undue magnification leads to distortion and a warped perspective (two apt descriptions of glamor)....

With the development of emotional moderation (and as the sixth ray astral nature is transformed into a calmer and more loving second ray type) these particular glamors begin to subside.

Michael Robbins' Tapestry of the Gods Volume p499

Ray 6 glammers

The glamour of devotion.

The glamour of adherence to forms and persons.

The glamour of idealism.

The glamour of loyalties, of creeds.

The glamour of emotional response.

The glamour of sentimentality.

The glamour of interference.

The glamour of the lower pairs of opposites.

The glamour of World Saviours and Teachers.

The glamour of the narrow vision.

The glamour of fanaticism.

Glamour A World Problem p123

Traits of a Ray Six astral body

- *Devotion; emotional dependency*
- *Emotionalism, reactivity, rapid arousal, undue emphasis; lack of emotional control*
- *Personalism*
- *Filled with desire rather than unselfish love*
- *Emotional persistence*
- *Emotional intensity (and possible fanaticism); aspirational strength and intensity*
- *Intense adherence and attachment*
- *One-pointed emotional orientation and drive*
- *Narrow 'band' of emotional responsiveness*
- *Tendency to emotional glamors*

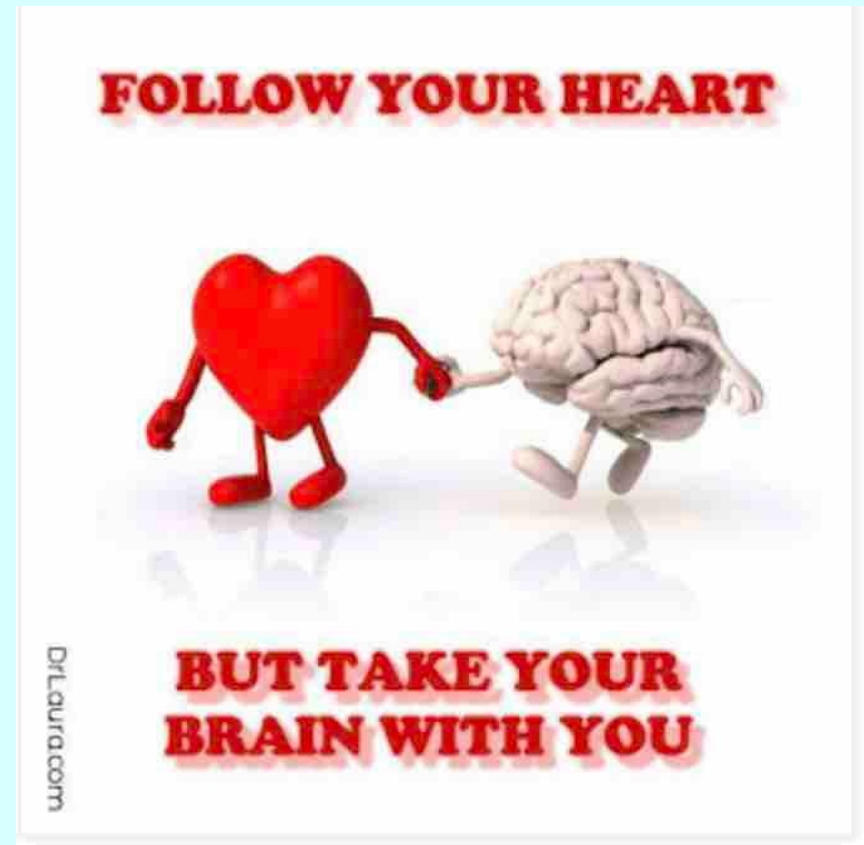
Glamour of devotion feeds spiritual pride & fanaticism

The glamour of devotion, leading to an undue stimulation of the astral body.

The man or woman thus glamoured sees only one idea, one person, one authority and one aspect of truth.

It feeds fanaticism and spiritual pride.

Discipleship In the New Age Volume I p27



Major quality of R6 astral body : devotion and devoted persistence

*Your astral body is on the sixth ray but,
...its major quality is devotion and
devoted persistence, and not fanaticism.*

Discipleship In the New Age Volume I p315

Other qualities

*Your astral body is, ...upon the sixth Ray of Devotion.
This gives you idealism, devotion to causes, your power
to sacrifice and your determination always to produce
good out of seeming evil.*

Discipleship In the New Age Volume I p205

R6 intensity in aspiration and the dynamic will to push forward

Your astral body is on the sixth ray.

*This gives you **intensity in aspiration and the dynamic will to push forward** which has sufficed hitherto to carry you over all obstacles.*

.... The transmuted, reoriented, higher attributes of those qualities should be your goal.

Discipleship In the New Age Volume I p447

R6: One- pointedness an asset but also a liability

Your astral body is upon the sixth ray.

This gives you the *one-pointedness* which is such an asset to any disciple,

but it also gives a *measure of narrowness* which at times handicaps you.

Discipleship In the New Age Volume I p540

Another source of your trouble is to be found in your sixth ray astral body (the ray of idealistic, fanatical devotion)

for it produces

- a real lack of balance,
- an undue attention to details of process, and
- of devotion to those details from the emotional satisfaction which comes from this attention;

this brings about a failure to understand the larger issues and an inability to move gently on the Way.

Discipleship In the New Age Volume I p415

R6 : intense adherence- great asset or a major hindrance to progress if fanatical



Stock.adobe.com

Your astral body is upon the sixth ray and here again lies for you a problem.

Upon it I need not enlarge, beyond reminding you that a sixth ray astral body (where a disciple is concerned) predicates intense adherence to a line of thought, to an idea, a group, a person or an attitude or to a preconceived notion.

These may be right or wrong but the tendency to adherence is powerfully present and can be a great asset or a major hindrance.

In any case—again for a disciple—any *idée fixe* (beyond that of a right spiritual orientation) can be a deterrent to progress, if fanatically motivated.

Discipleship In the New Age Volume I p582

R6 astral can produce sense of inferiority
but is a powerful piece of equipment to be
used in service

*Only your astral body is upon the sixth ray
of devotion, but that makes it potent
indeed and, in your case, produces that
sense of inferiority to which I referred
above.*

*I would ask you to change your point of
view and to regard your sixth ray astral
body as a **powerful piece of equipment
to be used in service.***

Discipleship In the New Age Volume I p477

Ray Six traits to be transmuted

- **Violence. Fanaticism. Willful adherence to an ideal.**
- **Short sighted blindness.**
- **fanaticism unreasoning devotion and blind acceptance of conditions**
DON78
- **Militarism and a tendency to make trouble with others and with groups.**
- **The power to see no point except one's own.**
- **Suspicion of people's motives.**
- **Rapid reaction to glamour and illusion.**
- **Emotional devotion and bewildered idealism.**
- **Vibratory activity between the pairs of opposites.**
- **Intense capacity to be personal and emphasise personalities,**

leading to

- **Directed, inclusive idealism.**
- **Steadiness of perception through the expansion of consciousness.**
- **Reaction to, and sympathy with, the point of view of others.**
- **Willingness to see the work of other people progress along their chosen lines.**
- **The choosing of the middle way.**
- **Peace and not war.**
- **The good of the Whole and not the part.**

Esoteric Psychology Volume I p42-43

Brief summary of astral effects of 6th Ray

Astral Force	Centre	Bad aspect	Good aspect
Sixth ray Devotion	Solar plexus	Emotionalism	Aspiration Direction

**Astral
Effects
of all
the
Rays
flowing
the
chakras**

Astral Force	Centre	Bad aspect	Good aspect
First ray Will or Power	Head	Self pity The Dramatic I	Sacrifice Dedication of the I
Second Ray Love-Wisdom	Heart	Self Love Personality	Soul Love Group Love
Third ray Activity	Sacral	Sexuality Over-activity	Parental love Group life
Fourth Ray Harmony	Ajna	Selfishness Dogmatism	Mysticism
Fifth ray Knowledge	Throat	Lower psychism Certain cancers	Creativity inspiration
Sixth ray Devotion	Solar plexus	Emotionalism	Aspiration Direction
Seventh ray Organisation Esoteric Healing p51	Base of the spine	Self interest Pure selfishness Black magic	White magic

6th Ray Astral body

- 6th plane - 6th ray - 6th vehicle

I would ask you to ponder, remembering that when the astral body is upon the sixth ray, there is necessarily established a line of least resistance between it and the sixth plane, for you have the sixth vehicle, the sixth plane, and the sixth ray all closely related.

Discipleship In the New Age Volume I p549

VI - Astral	* Head				1
		* Heart			2
			* Throat		3
	* Base	* Solar Plexus	* Sacral	* Splenic	4
					5
					6
					7

the sixth ray works through and controls the solar plexus Destiny of Nations p33

Solar plexus the most separative of all the chakras

Ajna



Crown
chakra



Alta Major



Throat
chakra



Heart
chakra



Spleen
chakra



Solar plexus



Sacral



Base of the
spine chakra

The solar plexus is thus the most
separative of all the centres

because it stands at the midway
point, between the throat and
the heart centres—above the
diaphragm—and the sacral and
basic centres—below the
diaphragm.

This is a consideration of major
importance. Esoteric Healing p171

Solar plexus the most active chakra in humanity

The solar plexus is the centre in the etheric vehicle through which humanity (average, unenlightened humanity) lives and moves and has its being.

Humanity is conditioned by desire—good desire, selfish desire, wrong desire, and spiritual desire.

It is the centre through which most of the energies flow which make a man progressive because he is ambitious, selfish because his personal desires are of importance, and fluidic because astrally polarised.

Through it the "bright light generated in Atlantis" is poured, and the astral light is contacted.



It is consequently a most disturbing centre in the body and is a basic cause of the majority of stomach complaints and troubles connected with the liver.

The entire area immediately below the diaphragm is in a constant state of turmoil, where average man is concerned; this is due to individual and collective causes. Esoteric Healing p172

6th principle of desire shifted from material desire into higher desire/values



Protest march for
democracy &
freedom
June 16th 2019
Hong Kong

Photographer: Kyle Lam/Bloomberg

Under the immediate expression of the sixth ray, the divine principle of desire has shifted potently away from the desire for material form into the realm of higher desire....

This is a relatively new phenomenon and one that should be carefully noted.

Down the ages, great sons of God have ever been ready to die for an idea; *today, whole masses of men are equally ready and have done so, whether it is the idea of a superhuman state, empire or nation, or some response to a major world need, or some potent adherence to some current ideology.*

This **indicates phenomenal racial achievement** and the pronounced success of the Hierarchy to shift human attention into the world from whence ideas emerge and on to the higher and the less material values. Destiny of Nations p113

Power of the sixth Ray expressed through Hercules, The buddha and the Christ



Hercules, the Sun-God, had a first ray soul, a second ray personality and a sixth ray astral body. These potencies and energies sufficed to carry Him through all the trials and the labours of the disciple



The Buddha had a second ray soul, a first ray personality and a sixth ray mind — a very rare phenomenon.

The Christ had a second ray soul, a sixth ray personality (which accounted for His close relationship with the Master Jesus), plus a first ray mind.



These three all embodied the essences of the spiritual life and all of Them were enabled to set Their seal upon history and upon the hearts of men, **largely through the potency of Their sixth ray expression.**

In Christ divine ideal presented for the 1st time to Humanity



In the word "idealism" you have the keynote of this ray — idealism taking form, providing a living example and indicating to the race of men their own divine potentialities.

In the appearance of the Christ, the divine ideal for the race, as a whole, was presented for the first time.

Destiny of Nations p37

***The Egoic Ray has direct and
specific action upon the astral
body.***

Esoteric Psychology Volume I p406

Astral body, path and egoic petals

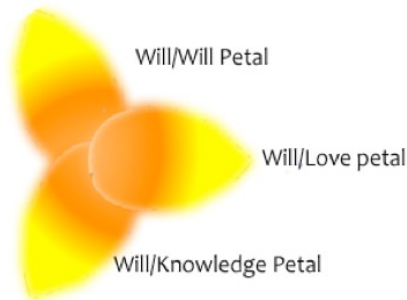


After the third initiation, the whole personality, composed of the three aspects, becomes sensitive to the energy of pure electric fire or life, as it pours through the "closed bud at the heart of the egoic lotus."

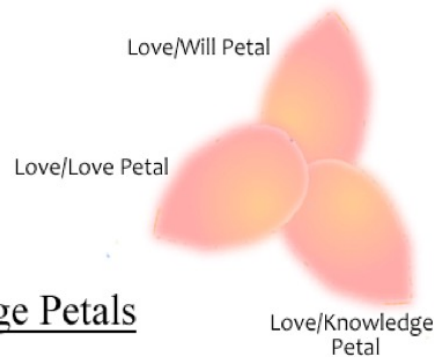
Thus the three aspects of the personality are brought into subjection by the energy emanating from the nine petals of the egoic lotus.

Esoteric Psychology Volume II p23

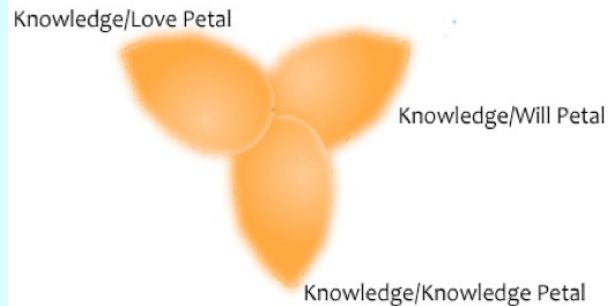
Will Petals



Love Petals



Knowledge Petals



Upon the Path of Initiation, until the third initiation, the ray of the mental body is subdued by the force of the petals of sacrifice, found in the third tier of petals.

On the Path of Discipleship, the ***astral body is brought into subjection by the ray of the soul as it pours through the second tier of petals, the love petals.***

On the Path of Probation, the ray of the physical body must become subordinated to the potencies emanating from those soul rays which stream forth from the outer tier of petals in the egoic lotus. These are the knowledge petals

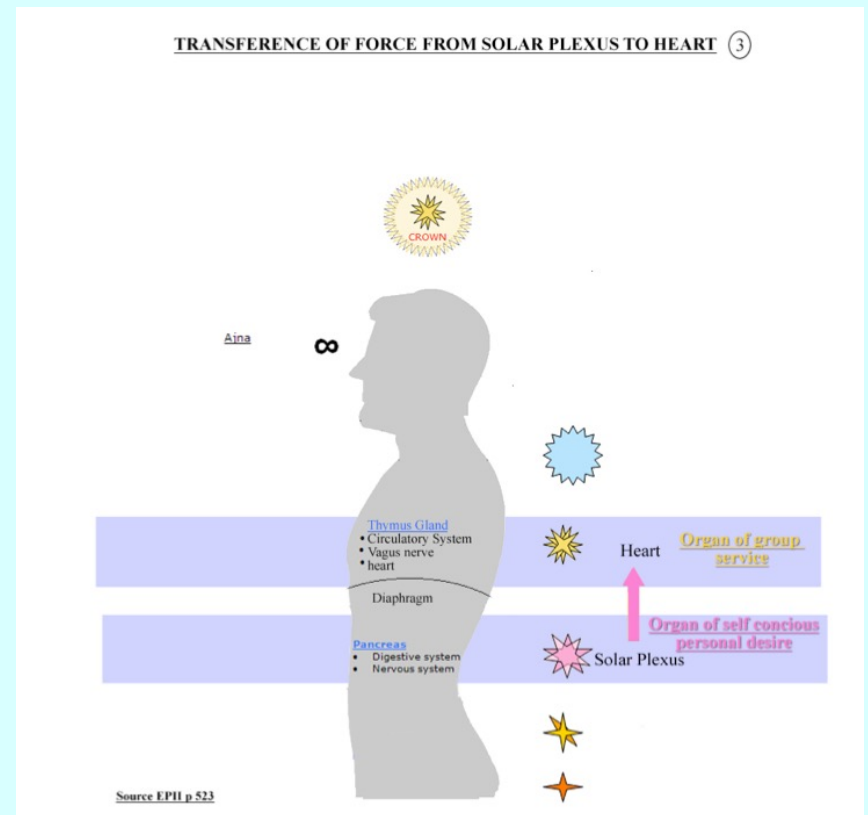
Graphics by Tanya Neff

Visualisation to lift life of astral body out of solar plexus into heart

I will give you now a personal meditation which will serve, I hope, to lift the life of the astral body out of the solar plexus into the heart centre, thus breaking down some of the limitations which will disappear when the astral body and the sixth ray astral force are transmuted and love of the whole takes the place of love of the part.

1. Take up the position mentally of the Observer....

2. Then, noting the dim light of the personality and the bright radiance of the soul, observe then another duality, i.e., the bright and powerful light or influence of the solar plexus and the wavering, fluctuating light of the heart centre.

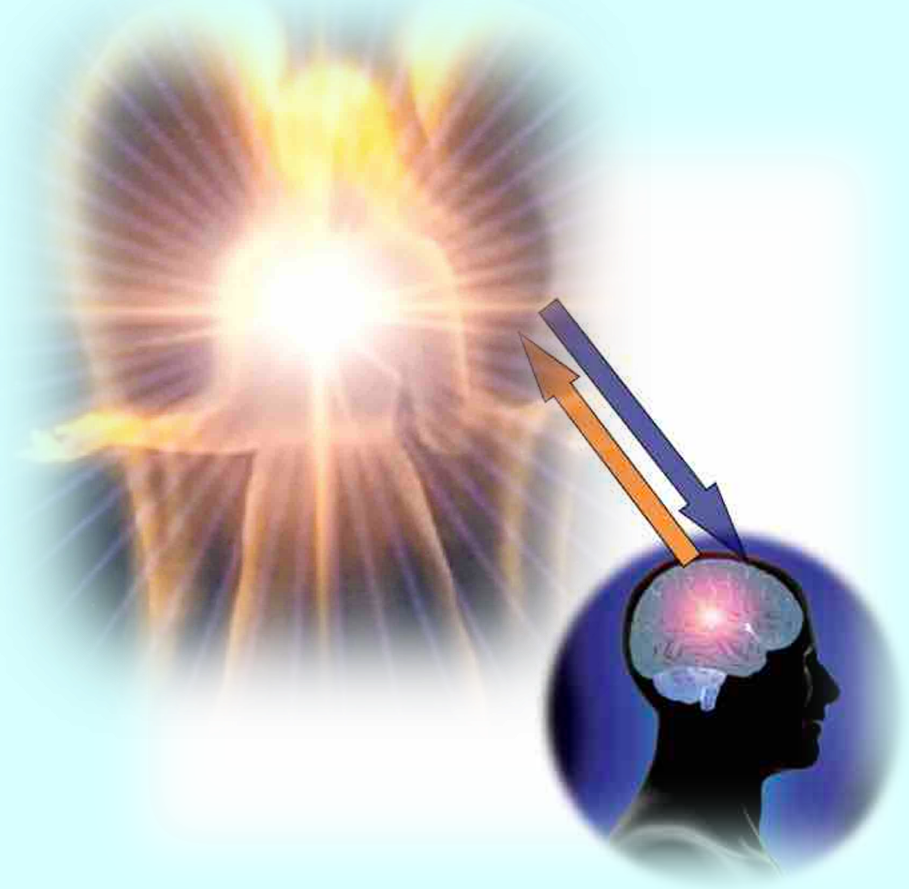


Visualisation to lift life of astral body out of solar plexus into heart

3. Then, through the power of the imagination, focus your consciousness in the radiant soul and hold it there steadily, linking the soul and the head centre, again by the power of thought.

4. Then sound the OM three times, breathing out the energy of the soul into the threefold personality and bringing that energy to rest (as in a reservoir of force) in the ajna centre.

There hold it, enhancing the light of the personality with the radiance of the soul.



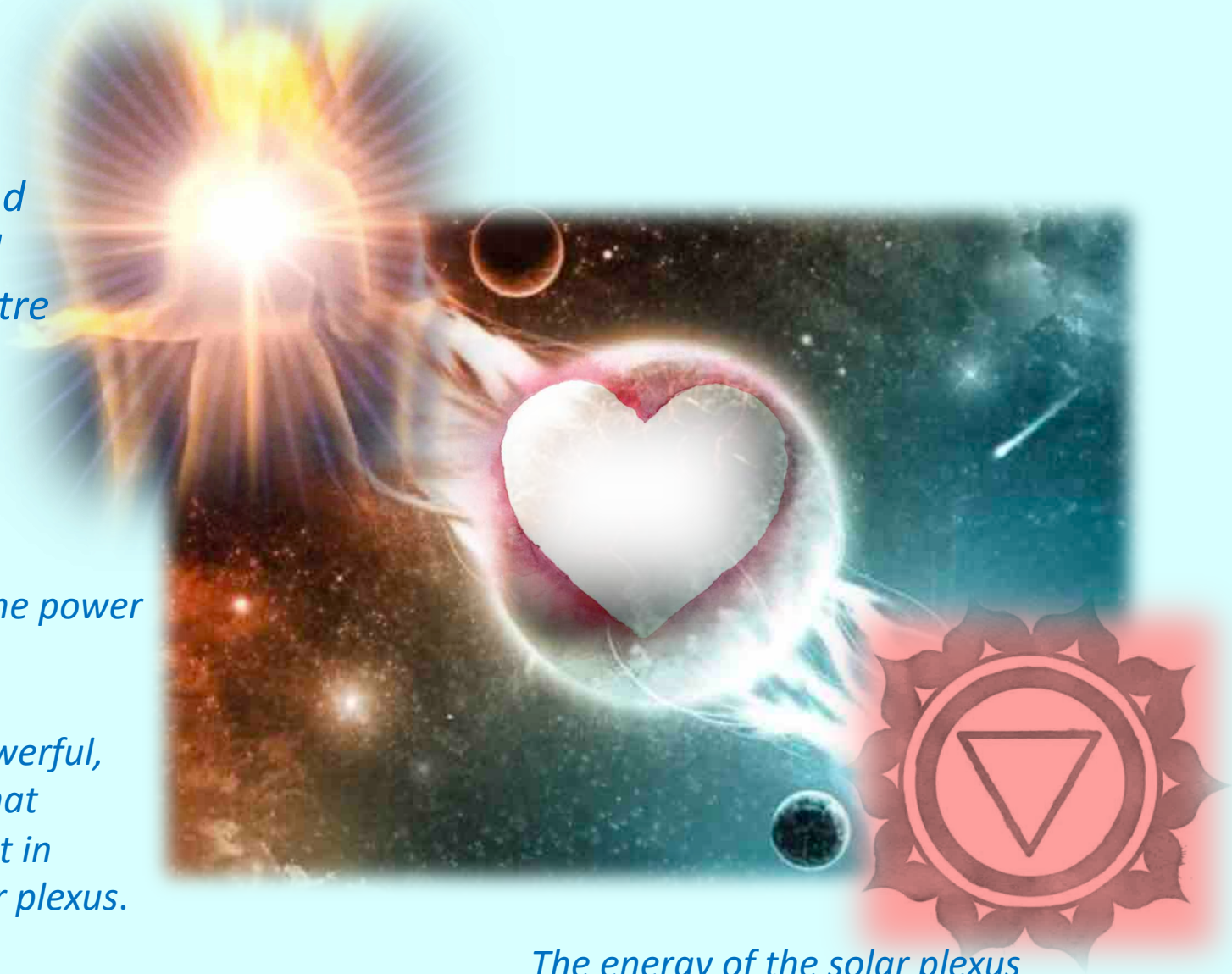
5. Next say:

- *The light of the soul puts out the dim light of the personality as the sun puts out the flame of a small fire.*
- *Soul radiance takes the place of personality light.*
- *The sun is substituted for the moon."*



*6. Then, definitely
throw the light and
energy of the soul
into the heart centre*

*believe—through the power
of the creative
imagination—that
it evokes such a powerful,
vibratory activity that
it acts like a magnet in
relation to the solar plexus.*

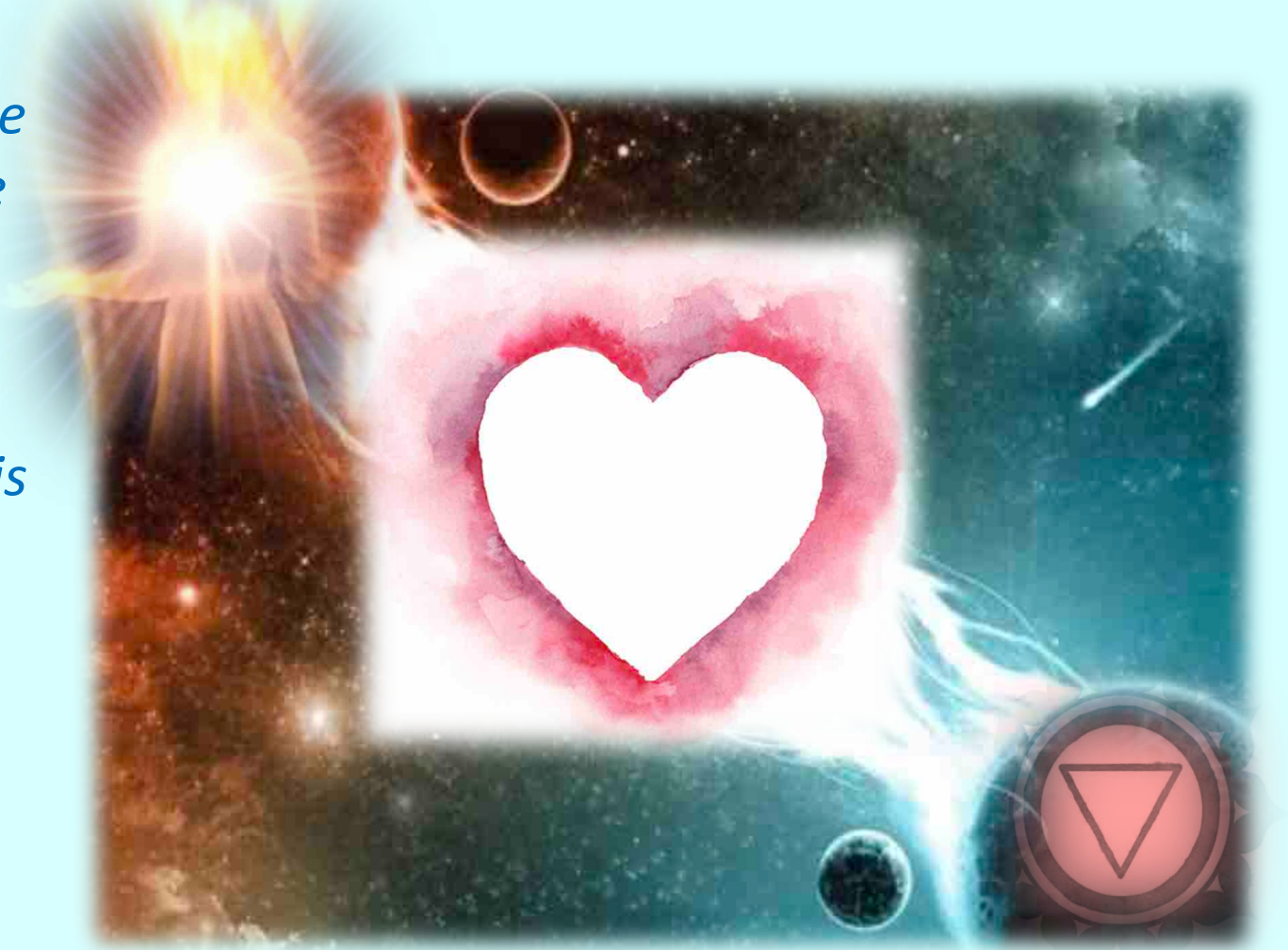


*The energy of the solar plexus
is lifted up or drawn up into
the heart centre and
is there transmuted into
soul love.*

7. Then still as the Observer, see the reversal of the earlier process.

The solar plexus is dimmed.

The radiance of the heart is substituted.



*The light of the soul remains
unchanged
but the light of the personality
is greatly brightened.*

*8. Then again as the
soul, united with the
personality, sound
the OM seven times,
breathing it out into
your environment.*

Discipleship In the New Age Volume II p686



Control of Soul on astral plane

Conclusion

The soul must control the astral body which must become like
*a “sea of glass” limpid and clear, mirror like,
 one that accurately transmits the wishes, the desires, the aspirations of the Ego and not of the personality.*

Letters on Occult Meditation p338

				7
V – Mental				1
				2
				3
	* Base	* Solar Plexus	* Sacral	4
			* Splenic	5
				6
				7
VI - Astral	* Head			● 1
		* Heart		2
		* Throat		3
	* Base	* Solar Plexus	* Sacral	4
				5
				6
				7
VII Ethereic	* Head			First Etheric subplane
	* Heart			Second Etheric subplane
	* Throat			Third Etheric subplane
	* Base	* Solar Plexus	* Sacral	Fourth Etheric subplane
Physical				Gaseous subplane
				Liquid subplane
				Solid subplane

Astral permanent atom